



INSTALLATION INSTRUCTIONS

GTI MAX CONNECT, ATTRACTION, CREATION CONNECT

These instructions are specifically written for the installation of the following products:

Product	Size	Thickness	Installation direction	Seams Welded
GTI MAX Connect	25" x 25"	6 mm	Same	CR 50 between batches
Attraction Tiles	25" x 25"	5 mm	Same	CR 50 between batches
Creation Connect	27.6" x 27.6 "	5 mm	Same	CR 50 between batches
Welding rod	5 mm	N/A	N/A	CR 50

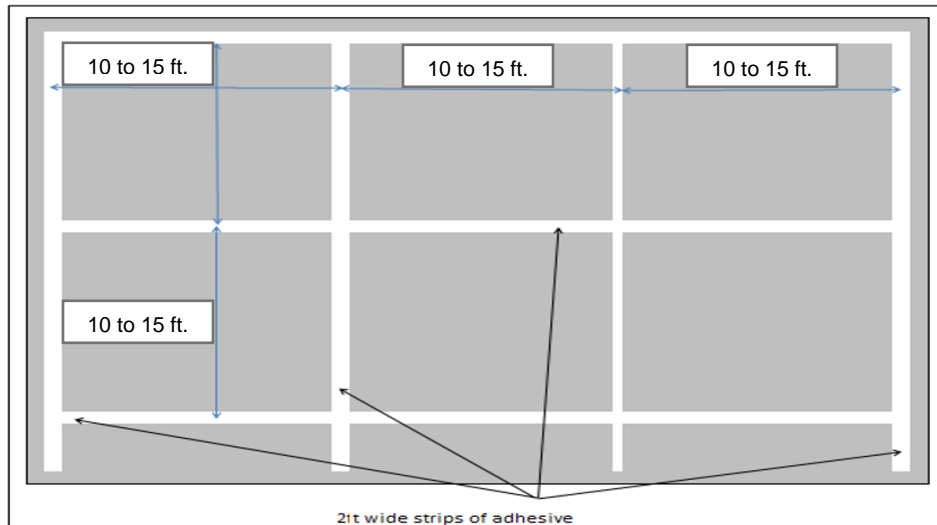
Important Note: Before installing, refer to Gerflor Installation Handbook for acclimation, job site conditions, subfloor prep, and other general installation recommendations.

1. GENERAL INFORMATION

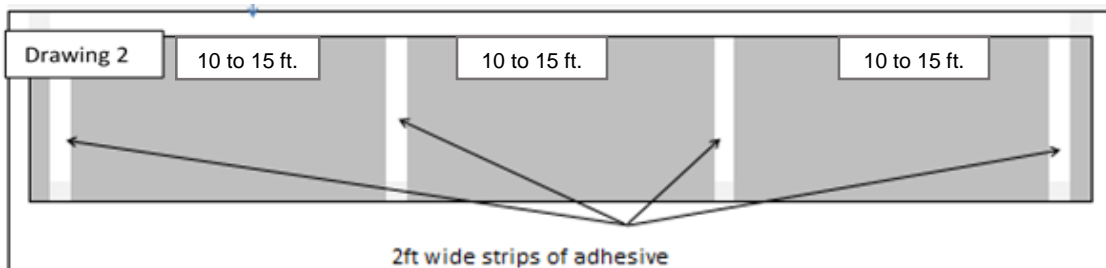
- 1.1. Gerflor flooring products are formulated to withstand high moisture conditions. To perform as designed, the concrete should be properly prepared to create a contaminant free and porous substrate.
- 1.2. Gerflor flooring products are not designed to withstand hydrostatic or osmotic pressure.
- 1.3. *The guidelines offered within this document are not intended to be all inclusive. Only qualified, professional flooring technicians experienced in the field of resilient flooring should proceed with this installation system.*
- 1.4. It is recommended to mechanically prepare the concrete via grinding or bead blasting the surface to achieve a CSP 1+, clean and porous substrate.
- 1.5. Moisture and pH testing must be performed in accordance with ASTM F710-17.
- 1.6. Adhesive bond tests are recommended to ensure adequate bonding to the substrate.
- 1.7. Do not install material that has visible defects or damage. A contractor that installs material that has visible defects or damage assumes responsibility for that material.

2. LAYOUT AND INSTALLATION

- 2.1. Use Gerfix Spray, or Gerfix 100 adhesive
- 2.2. Mark a control/starting line.
- 2.3. Install the first row along this line.
- 2.4. Install successive tiles according to the layout.
- 2.5. Apply adhesive every 10 to 15-lin. ft. in both directions as seen on the drawing below:

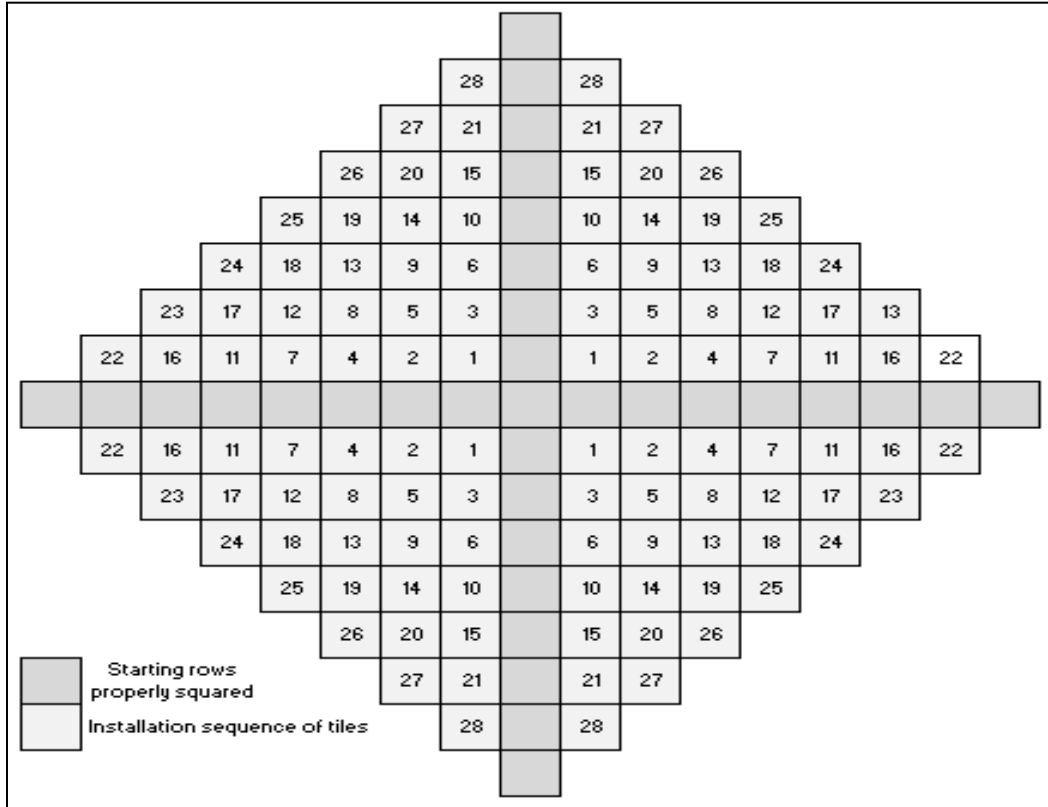


- 2.6. In corridors, the tiles must be glued down every 10 to 15 feet across the width to stabilize.



- 2.7. After the first rows in each direction have been established, two-foot-wide strips of adhesive must be applied every 15 linear feet in both directions.
- 2.8. For areas with direct sunlight, temperature fluctuations, and heavy traffic of rolling loads, we recommend full application of the adhesive.
- 2.9. A gap of 1/4" minimum must be left on the perimeter of the walls.
- 2.10. Tiles must be heat-welded where different lots are meeting.
- 2.11. **DO NOT** mix batches of tiles.

3. INSTALLATION SEQUENCE OF TILES



NOTE: The tiles have factory arrows on back and must be installed in the same direction

- 3.1. Follow the installation sequence to avoid any failures.
- 3.2. Chalk the centre lines of the work area in both directions so that one line is parallel to the length of the room and that the second line is on a 90° angle to the first line

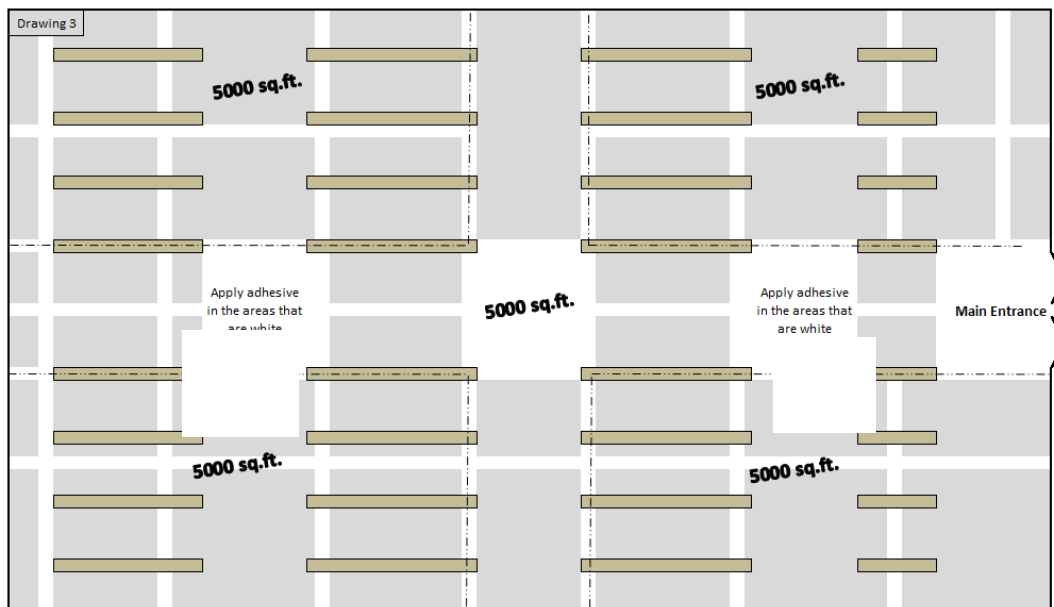
NOTE: Do not force tiles to follow the control line. As the tiles are installed and conform to the substrate, they will “self-adjust” as needed when connected.

- 3.3. Position centre lines to allow the perimeter tiles to be $\geq \frac{1}{2}$ tiles.
- 3.4. Use a composite dead blow hammer to interlock the tiles properly.
- 3.5. Use the hammer to secure the dovetails at the outer edges of the tiles and the centre where the adjacent tiles meet, then hammer the remaining dovetails down.
- 3.6. As the tiles are installed, inspect the dovetails to ensure they are flush. Use hammer as needed to seat them properly.
- 3.7. It is normal to see small shaving appear from the dovetails when the tiles are hammered down. Be sure not to let any shaving or debris fall under the tiles during the installation.
- 3.8. When installing around fixed objects, dry lay the row of tiles closest to the object on both sides and ends until the tiles wrap around and meet. This will allow the tiles to be slightly



adjusted if needed to engage the dovetails. Then continue with the pyramid installation process and adhesive application.

- 3.9. Roll flooring with a 3-section 100 lbs roller within one hour after installation to complete the bonding process.
- 3.10. For areas greater than 5000 sq. ft., we recommend gluing down specific areas of the surface.
- 3.11. Tiles must be heat-welded where different lots are meeting (dotted lines).
- 3.12. The dotted lines show the junction between different lots where it will need to be heat-welded. (Approximately 5000 sq. ft. per lot)



4. CUTTING AND FITTING

- 4.1. For door jambs or other irregular cuts, mark tiles with a pencil, heat with a hot air gun, and cut with a sharp utility blade. The tiles will cut easily when heated sufficiently. Pattern/scribing paper can also be used for fitting irregular shapes.
- 4.2. The perimeter cuts can be made with a table saw and fine-tooth blade.
- 4.3. A bullet PRO I-26 Magnum shear is highly recommended for faster, precise perimeter cutting

NOTE: Creation Connect will not fit in the 26-inch Bullet cutter

- 4.4. WEN 12 Amp Speed Plunge Cut Circular saw is an economical tool that can also be used for cutting perimeters. (Guide rails are also available.)

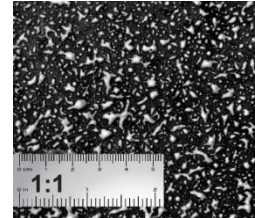


5. INSTALLING USING GERFIX SPRAY ADHESIVE

- 5.1. Always refer to the **Gerfix Spray Adhesive Technical Data Sheet**
- 5.2. Recommended spray pattern: (150 to 185 sq. ft. per can)
- 5.3. Ensure substrate, flooring, and surrounding areas are clean and dust free.
- 5.4. Wipe hand across the surface to verify for dust.
- 5.5. If dust transfers, substrate is not clean.
- 5.6. Damp-mop substrate if dust is present.



dust.



- 5.7. Protect from overspray with a spray shield, drop cloths, paper, or masking tape.
- 5.8. Shake aerosol can well. Remove white cap.
- 5.9. To ensure uniform adhesion of the entire surface, spray a workable amount of adhesive at once.
- 5.10. Stand straight up to spray. Hold can upside down, approximately 20-30 inches horizontally from the substrate, aim at floor and press tip with a finger.
- 5.11. Walk right to left smoothly to achieve results as seen on photo.
- 5.12. Adhesives should spray out in a wide mist and fall like snow.
- 5.13. Spraying in a sweeping motion may result in an inconsistent spray pattern.
- 5.14. Excess buildup or inconsistent spray pattern on the substrate may cause telegraphing.
- 5.15. Avoid extremely heavy application.
- 5.16. To ensure optimal spray pattern, remove any adhesive build up that may occur during the application process.



- 5.17. If overspray occurs, it may be removed with a damp cloth while the adhesive is still wet.
- 5.18. Allow adhesive to dry until there is no adhesive transfer when lightly touched. (10-20 min)
- 5.19. High humidity and/or low temperature increases tack time.
- 5.20. Once the adhesive is dry to the touch, immediately install the flooring. While open, ensure that adhesive is not contaminated by dust.




- 5.21. Roll flooring with a 3 section 100 lbs roller within 1 hour after installation to complete the bonding process.
- 5.22. Always roll seams, at the walls, and under toe kicks with a hand roller to ensure 100% transfer of adhesive.
- 5.23. The floor is open to all traffic immediately after installation.



INSTALLATION INSTRUCTIONS

GTI MAX CONNECT, ATTRACTION, CREATION CONNECT

6. INSTALLING USING GERFIX 100 ADHESIVE

- 6.1. Always refer to the **Gerfix 100 Adhesive Technical Data Sheet**.
- 6.2. Follow the guidelines indicated on the Technical Data Sheet.
- 6.3. Recommended trowel size is 1/32" x 1/16" x 1/32," covering from 170 to 220 sq. ft. per US gallon. 
- 6.4. To ensure uniform adhesion of the entire surface, apply a workable amount of adhesive at once.
- 6.5. Maintain a uniform spread rate. Replace trowel (or trowel blade) with every pail used.

Application Characteristics over Porous Substrates "ONLY"		
	Open Time*	Working Time**
GTI, Attraction & Creation Connect Tiles	10 minutes (do not allow adhesive to completely dry)	Up to 45 minutes

* **Open Time:** is the wait time required before installing flooring into the adhesive.

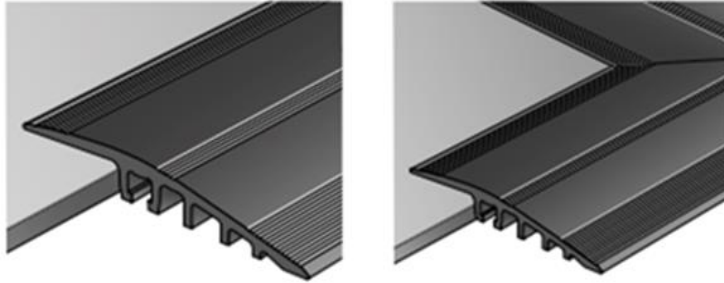
** **Working time:** is the wait time required before installing flooring into the adhesive.

- 6.6. Wait 10 minutes after spreading the adhesive to build surface tack and reduce movement
- 6.7. The **use of kneeling boards is mandatory** when working on top of freshly installed flooring
- 6.8. Starting from the centre line and working outward, apply the adhesive and install tiles when the adhesive is ready.
- 6.9. Press tiles firmly against adjoining tiles and press into the adhesive.
- 6.10. **Roll the flooring as it is installed using a 3-section hand roller and normal pressure**
- 6.11. Periodically, lift the edge of a tile to confirm 100% transfer of adhesive to the back of the flooring. There must be adhesive transfer for the tiles to be adequately secured to the substrate.
- 6.12. **Once flooring is placed into the adhesive, wait a minimum of one hour, but no more than two, and roll thoroughly with 3 section 100 lbs steel rollers in both directions.**
- 6.13. Always roll seams, at the walls, and under toe kicks with a hand roller to ensure 100% transfer of adhesive.
- 6.14. Use mineral spirits to remove fresh or dried adhesive from the surface of the flooring
- 6.15. **Avoid adhesive displacement by prohibiting traffic for a period of 6 hours for light traffic, and 8 hours for heavy static & dynamic loads.**
- 6.16. Following the above steps is of the utmost importance for a successful installation that will resist high moisture levels and be serviceable over the life of the floor.

NOTE: Use Gerfix 100 adhesive in areas that are subject to topical water (i.e., commercial refrigerators, coolers in grocery stores, lobby of buildings, etc.

7. DOORWAYS AND TERMINATIONS

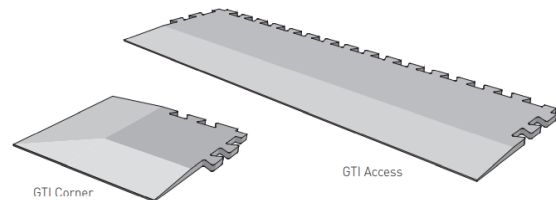
7.1. ALUMINUM PROFILE



- 7.2. For heavy traffic and can be used for GTI or Attraction tiles. (Premade corner pieces are also available.)
- 7.3. 4 mm x 50 mm and 30mm long nylon plugs are included in profile kit.
- 7.4. Cut tiles and lay metal at desire location.
- 7.5. Hold metal securely and use hammer to drill 3 mm pilot holes through the centre of each hole.
- 7.6. Remove metal and finish holes with 6 mm drill bit.
- 7.7. Vacuum holes and insert nylon plugs
- 7.8. Realign metal and secure with 4 mm x 50 mm screws and Philipps screwdriver.

7.9. GTI ACCESS AND CORNER PIECES

- 7.10. For moderate traffic, only available for GTI
- 7.11. Must be glued down using T-111 adhesive
- 7.12. Weight down until adhesive cures



8. HEAT WELDING - REFER TO THE “HEAT WELDING GERFLOR VINYL PRODUCTS” DOCUMENT

9. ONCE THE INSTALLATION IS COMPLETED

- 9.1. Perform a visual inspection of the project.
- 9.2. Verify every welded seam.
- 9.3. Repair every imperfection before leaving the project.
- 9.4. Make sure that every vertical obstacle such as doorframes is well trimmed and sealed with an acrylic, silicone, or equivalent sealant product.
- 9.5. To maximize the aesthetic appearance and serviceability of the newly installed flooring, provide your customer with a copy of the **Gerflor Maintenance Instructions**.